



**TORTI
GALLAS
URBAN**



MIDCITY

1200 5TH STREET NW

ISSUED:
CONSOLIDATED PUD APPLICATION
PRE-HEARING SUBMISSION

August 1, 2019
October 8, 2019

SITE EXHIBITS

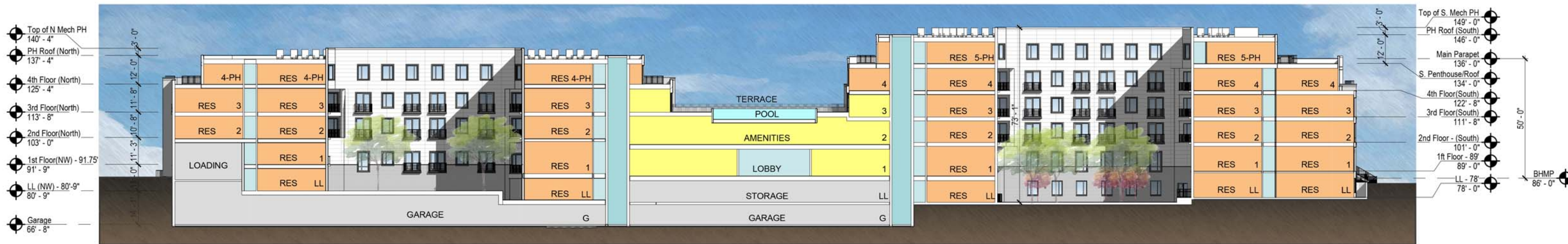
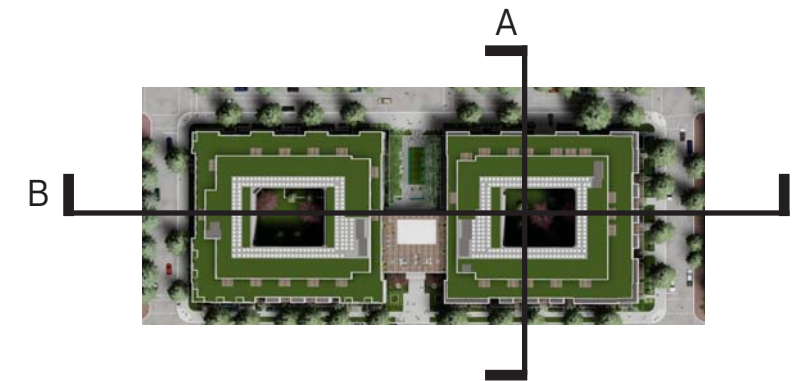
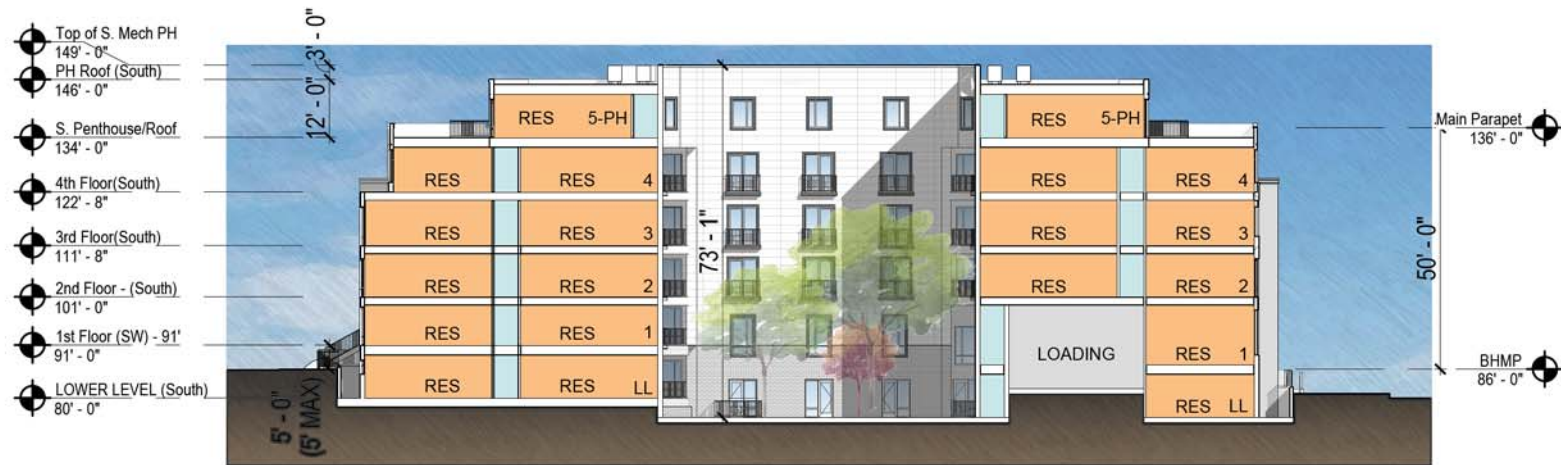
FIRST FLOOR PLANA02
BUILDING SECTIONA10
STREET SECTION - M STREET NWA10a
AERIAL VIEW FROM SOUTHWESTA11
VIEW FROM SOUTHWESTA12
VIEW OF ENTRY COURTA14
AERIAL VIEW FROM SOUTHEASTA16
VIEW FROM RIDGE STREETA18
ELEVATIONSA25
ENLARGED ELEVATIONSA26

Updated ground floor plan showing the 6 electric vaults versus the 4 in the previous plan.

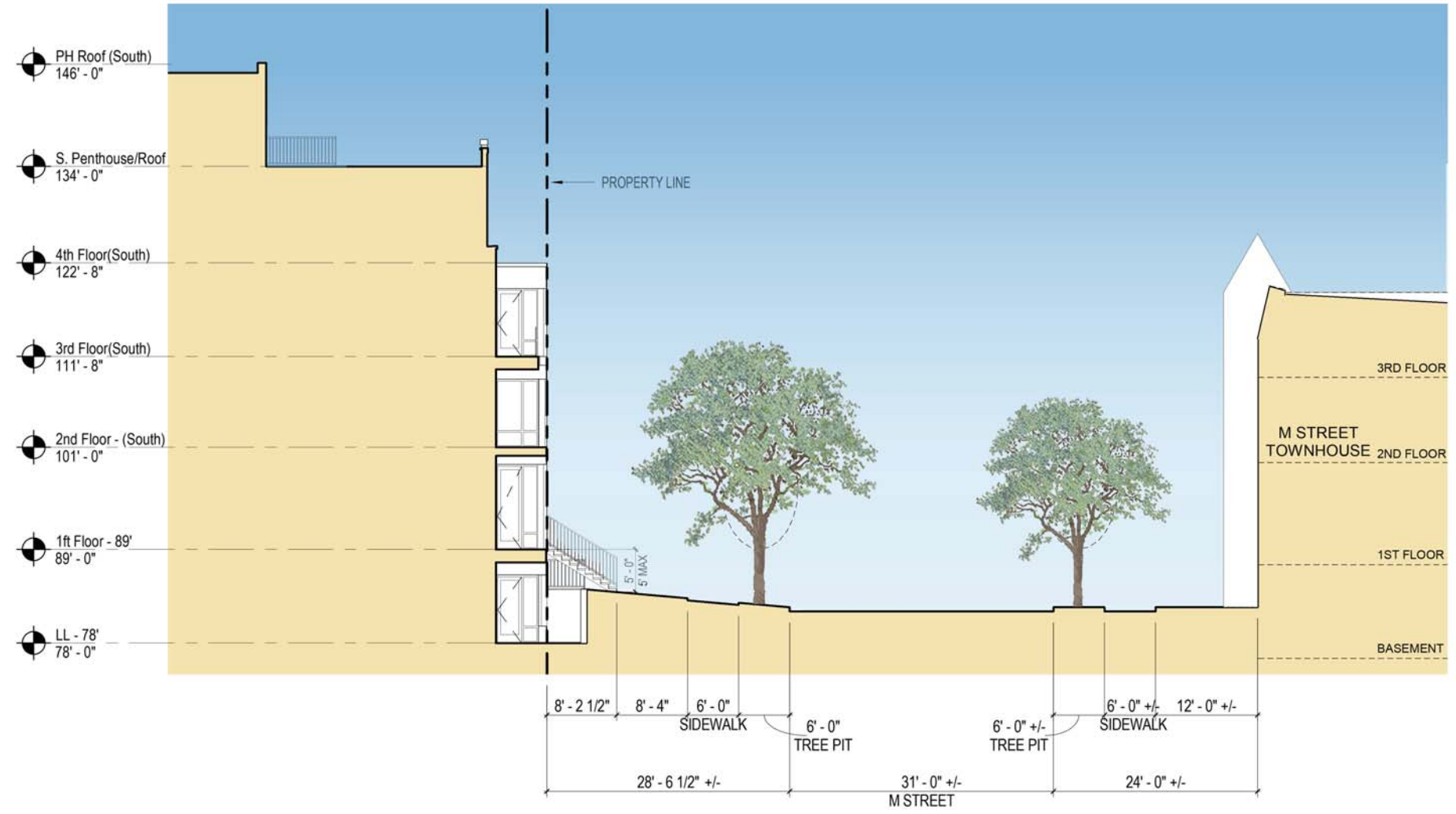
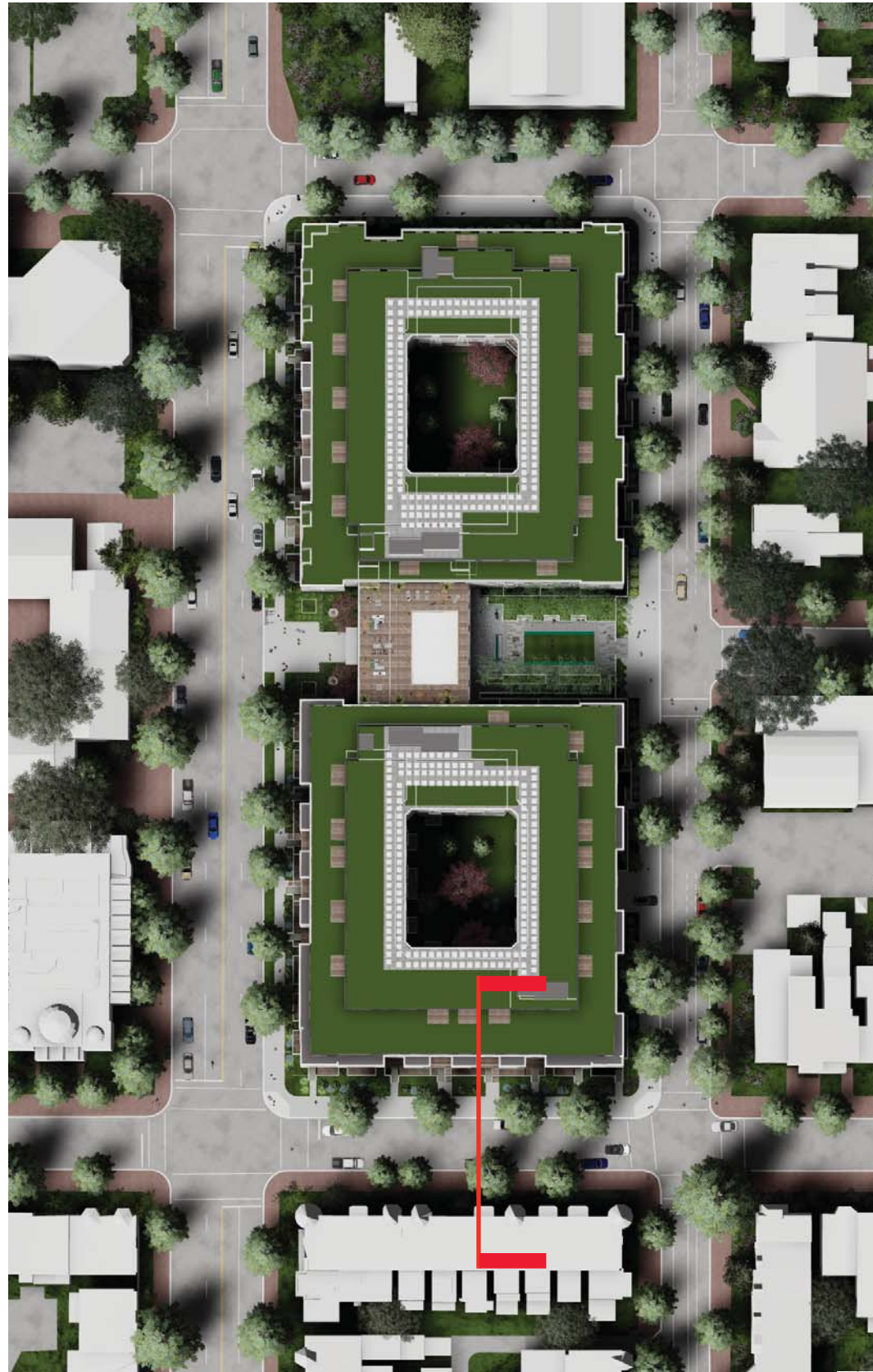


Note: The interior layouts shown on the building plans are schematic. Changes to the layouts, not affecting the exterior envelope or the square footage distribution, may occur. For additional dimensions see sheet A08

Updated courtyard elevation design in both the north and south courtyards.



New section showing the relationship between the first floor and lower level units to the street, similar to the historic townhouses on M street.



Updated 4th floor and penthouse panel color to a dark grey panel and added courtyard fenestration.



October 8, 2019 ©2019 Torti Gallas Urban | 650 F Street, NW Suite 690 | Washington, DC | 202.232.3132

Note: Rendering view, angle and lighting chosen to best illustrate design intent. Context and Streetscape shown to best illustrate design intent.



MIDCITY FINANCIAL
TORTI GALLAS URBAN, INC.

AERIAL VIEW FROM SOUTHWEST
1200 5TH STREET NW

Updated 4th floor and penthouse panel color to a dark grey panel.



October 8, 2019 ©2019 Torti Gallas Urban | 650 F Street, NW Suite 690 | Washington, DC | 202.232.3132

Note: Rendering view, angle and lighting chosen to best illustrate design intent. Context and Streetscape shown to best illustrate design intent.



MIDCITY FINANCIAL
TORTI GALLAS URBAN, INC.

VIEW FROM SOUTHWEST
1200 5TH STREET NW

Updated 4th floor and penthouse panel color to a dark grey panel and modified entry to dark grey brick and dark grey panel.



October 8, 2019 ©2019 Torti Gallas Urban | 650 F Street, NW Suite 690 | Washington, DC | 202.232.3132

Note: Rendering view, angle and lighting chosen to best illustrate design intent. Context and Streetscape shown to best illustrate design intent.



MIDCITY FINANCIAL
TORTI GALLAS URBAN, INC.

VIEW OF ENTRY COURT
1200 5TH STREET NW

Updated 4th floor and penthouse panel color to a dark grey panel and added courtyard fenestration.



Updated 4th floor and penthouse panel color to a dark grey panel and modified entry to dark grey brick and dark grey panel.



October 8, 2019 ©2019 Torti Gallas Urban | 650 F Street, NW Suite 690 | Washington, DC | 202.232.3132

Note: Rendering view, angle and lighting chosen to best illustrate design intent. Context and Streetscape shown to best illustrate design intent.



MIDCITY FINANCIAL
TORTI GALLAS URBAN, INC.

VIEW FROM RIDGE STREET
1200 5TH STREET NW

Updated 4th floor and penthouse panel color to a dark grey panel and modified entry to dark grey brick and dark grey panel.



WEST ELEVATION



NORTH ELEVATION



SOUTH ELEVATION



EAST ELEVATION

Updated 4th floor and penthouse panel color to a dark grey panel

MATERIALS LEGEND

- 1 Masonry - Color #1
- 2 Masonry - Color #2
- 3 Cementitious Panel #
- 4 Cast Stone
- 5 Windows & Doors
- 6 Railing
- 7 Metal Panel

CEMENTITIOUS PANEL #1

CAST STONE

MASONRY - COLOR #1

MASONRY - COLOR #2

WINDOWS, DOORS, & METAL PANEL



SOUTH ELEVATION

October 8, 2019 | ©2019 Torti Gallas Urban | 650 F Street, NW Suite 690 | Washington, DC | 202.232.3132



MIDCITY FINANCIAL
TORTI GALLAS URBAN, INC.



ENLARGED ELEVATIONS
1200 5TH STREET NW